

NANO UV LASER  
**Expert II 355** Series

**3W -10W**  
Nanosecond UV Laser



Laser wavelength

**354.7nm**

Pulse Width

**<14ns**

Pulse-to-Pulse Stability

**<3%rms**

### Application

It is widely used in PE/PCB/FPC cutting, glass & sapphire cutting, drilling, scribing & cutting used in high precision micromaching areas.

PARAMETER	INDEX	DESCRIPTION
Laser wavelength	354.7nm	
Average Output Power	3.0-10.0W	@30kHz
Pulse Width	<14ns	@30kHz
Pulse Repetition Rate	10-200kHz	
Spatial Mode	TEM00	
M <sup>2</sup>	<1.2	
Beam Diameter	0.8±0.2mm	Measured at window
Beam Full Divergence Angle	<1.2mrad	
Beam Circularity	>90%	
Pulse-to-Pulse Stability	<2%	RMS/@30kHz
Average Power Stability	<5%	RMS/8hr
Beam-Pointing Drift	<30μrad/°C	
Polarization Ratio	>100:1	
Polarization Orientation	Horizontal	
Operating Temp. & RH	10°C to 30°C	
	<80%	
Storage Temp. & RH	-20°C to 65°C	
	<90%	
Electricity Requirement	100-240VAC	Single phase
	50/60Hz	
Power Consumption	<500W	

Laser power and other characteristics can be optimized in different repetition frequency ranges;  
The temperature referred to is the ambient temperature.



Laser wavelength at 354.7nm, repetition rates cover a wide range (10kHz to 200kHz) ;



Exceptional beam quality ( $M^2 < 1.2$ ), absolutely assured in all repetition rates; relatively short pulse width  $< 14\text{ns}@30\text{k}$  with little heat affected zone (HAZ);



Unique Q-switching technology, adapts a variety of control requirements of laser applications; longer laser lifespan and more stable operation;



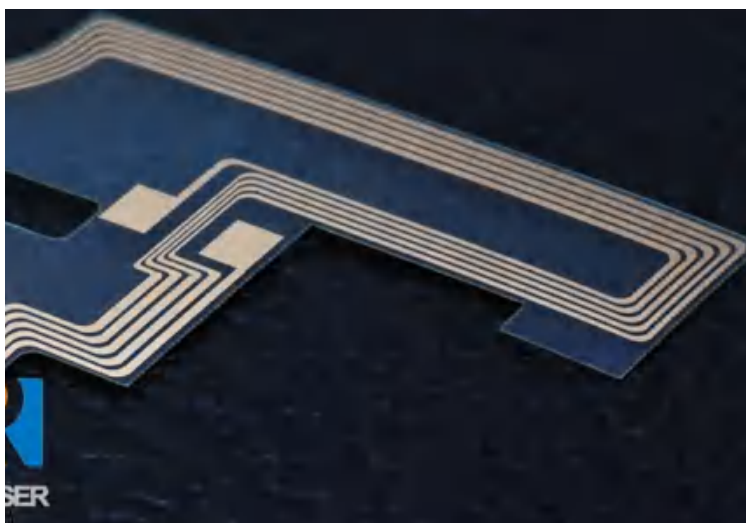
All-digital intelligent power control technology, easy to operate and convenient to monitor;



Support computer communication and external control of the laser via RS232;



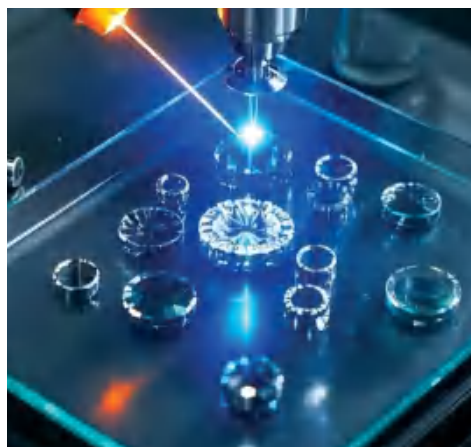
All-in-one design, convenient for equipment integration.



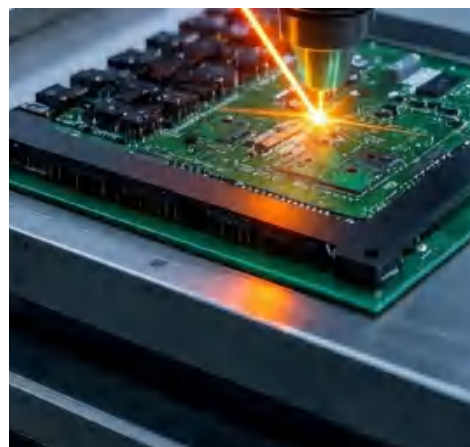
PCB Cutting



Glass And Sapphire Cutting



Precision Drilling



Precision Cutting



SHENZHEN RFH LASER TECHNOLOGY CO., LTD.

Add: 2nd Floor, Building M10, Central District, High-tech Industrial Park, Nanshan District, Shenzhen

Tel: +86-755-86375012 Fax: +86-755-86028961

Email: sales@rfhlasertech.com Http://www.rfhlasertech.com Service Hotline: +86-755-86375012



瑞丰恒公众号 RFH-Laser